

Handbook

Table of Contents



1. Attributes	2
1.1. Environment attributes	2
1.2. Custom attributes	2
2. Admonitions	3
3. Source code	4
3.1. Inline source	4
3.2. Referenced source	4
4. Diagrams	5
4.1. Graphviz	5
4.2. Plantuml	5
5. Sub-document	6
5.1. Inclusions	6
6. Links	7
6.1. Internal cross references	7
6.2. Inter-document cross references	7
Index	8



More

This is a nice PDF handbook, but you should also try out:



- the [Maven site](#) version *Maven*
- the [HTML handbook](#) version 
- the [revealjs slides](#) version 

1. Attributes

Demo the usage of attributes.

1.1. Environment attributes

- backend: pdf
- asciidoctor-version: 2.0.8

1.2. Custom attributes

Variables can be passed as custom attributes, initialized from a maven property (no maven filtering of .adoc files needed)

```
<attributes>
  <awesome-version>${awesome.version}</awesome-version>
</attributes>
```

Awesome library version: **1.3.**

2. Admonitions

Demo the display of icons as images or fonts.



Note



Warning



Tip



Important



Caution

3. Source code

Demo source code inclusion.

3.1. Inline source

```
public class HelloWorld {  
    public static void main(String[] args) {  
        // Prints "Hello, World" to the terminal window. Here is some very large  
        comment that should cause an overflow  
        System.out.println("Hello, World");  
    }  
}
```

- ↪ The class name
- ↪ The main method

3.2. Referenced source

```
public static void main(String[] args) {  
    System.out.println("Hello, World");  
}
```

- ↪ The main method

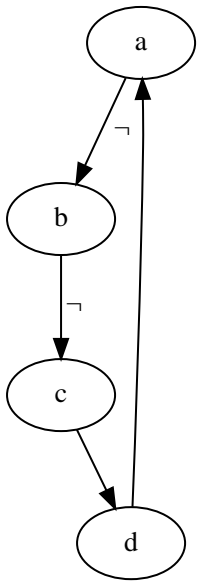


Also see the [Javadoc](#).

4. Diagrams

Demo the inclusion of semantic diagrams.

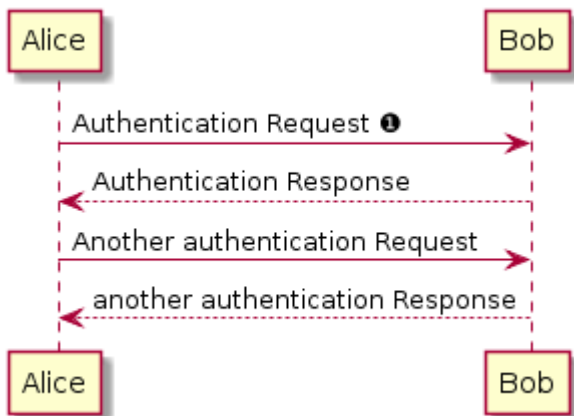
4.1. Graphviz



From a to b

From b to c

4.2. Plantuml



Uses SSL

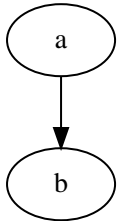
5. Sub-document

Demo the inclusion of sub-documents, with relative paths for images/icons/diagrams.

5.1. Inclusions



Note



6. Links

Demo linking across sections and documents.

6.1. Internal cross references

Also refer to these other sections:

- [Source code](#)
- [Sub-document](#)

Glossary elements like [something](#).

6.2. Inter-document cross references

Also refer to these documents:

- [Slides](#)
- [Handbook](#)

Index

A

admonitions, [3](#)

F

fonts, [3](#)